



PRESIDIUM[®]

PGCG Software (Windows)

Installation Guide



Table of Contents

1. Installing PGCG Software	2
-----------------------------------	---

1. Installing PGCG Software

Step 1: Click on the setup.exe file to open the setup wizard for the installation.

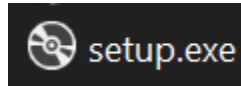


Figure 1

*Please skip steps 2 - 3 if you already have the Microsoft Access Database Engine 2010 installed.

Step 2: Click “Accept” to download and install the Microsoft Access Database Engine 2010.

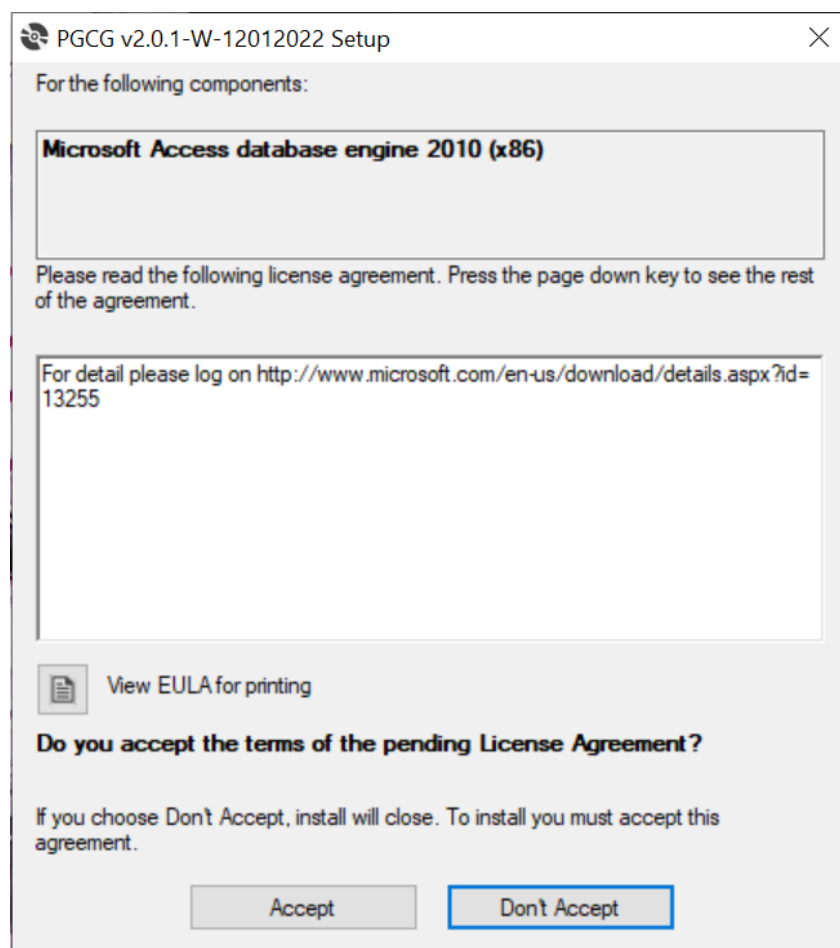


Figure 2

Step 3: Please wait for the download and installation to be completed before installing the PGCG Software.

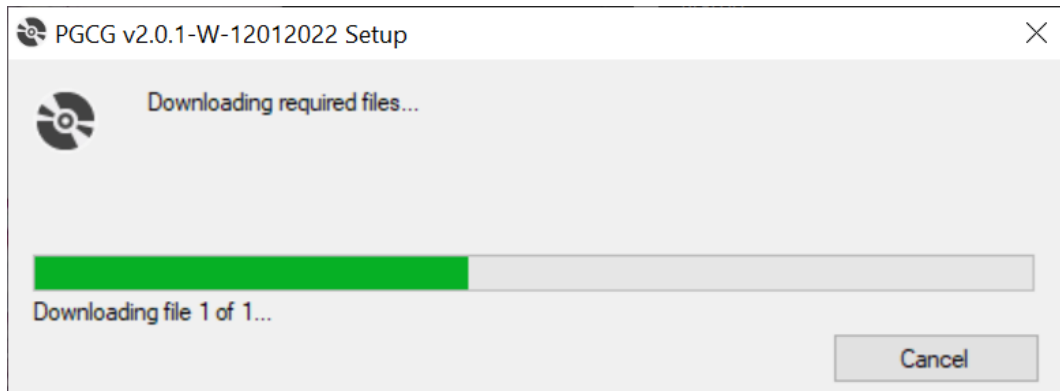


Figure 3

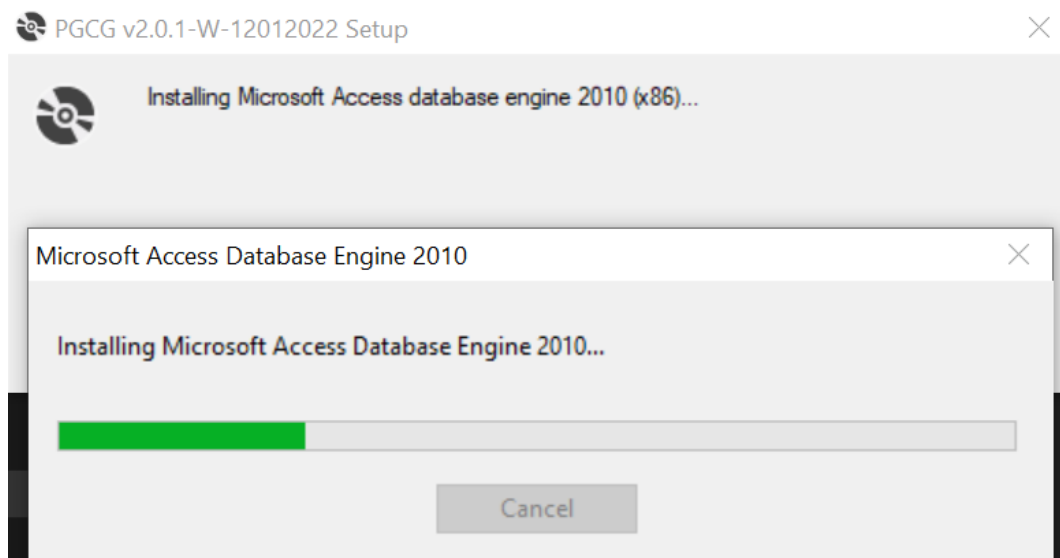


Figure 4

Step 4: Click “Next” to continue with the installation process.

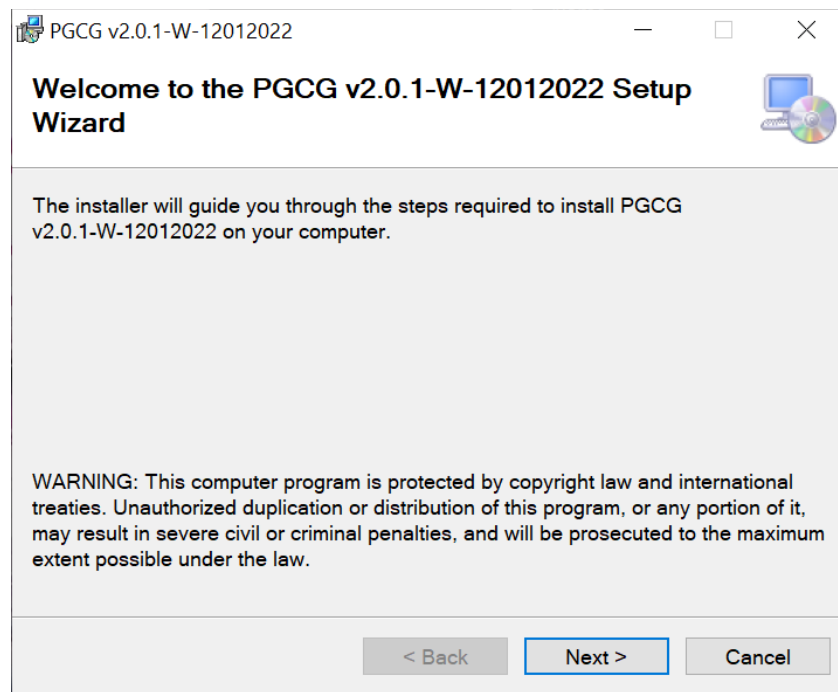


Figure 5

Step 5: Please take a look at the license agreement and click “I Agree” to accept the terms stated.

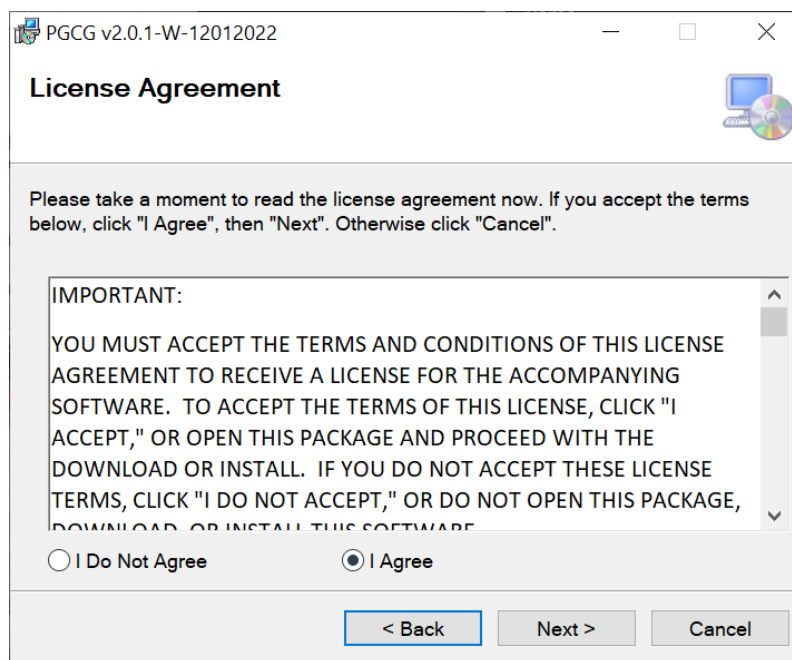


Figure 6

Step 6: Select the location where the software is to be installed. You may choose to use the default location or browse for the location you prefer.

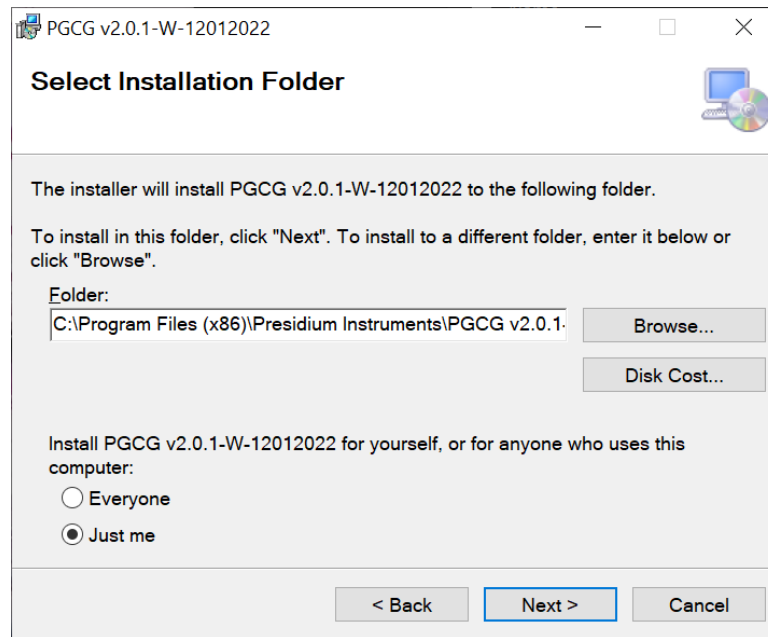


Figure 7

Step 7: Once the above steps are completed, click “Next” to confirm the installation.

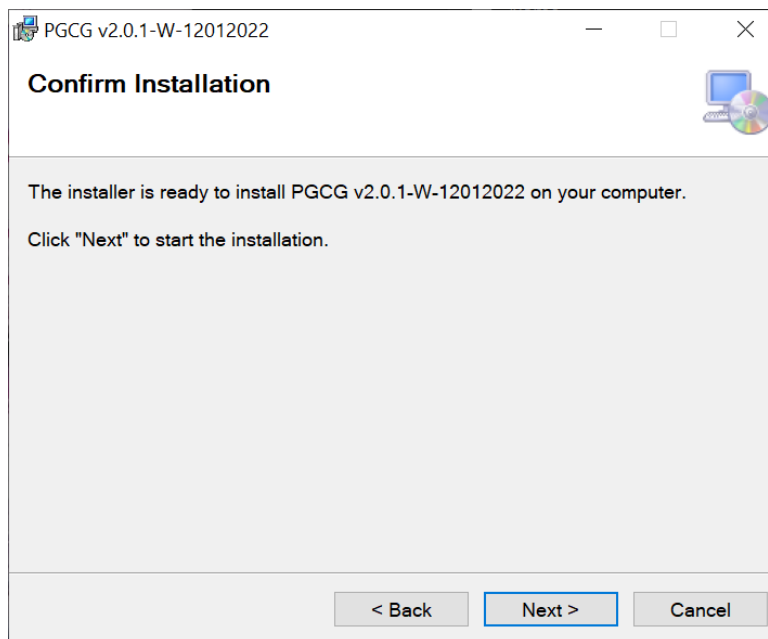


Figure 8

Step 8: Please wait for the software to finish installing.

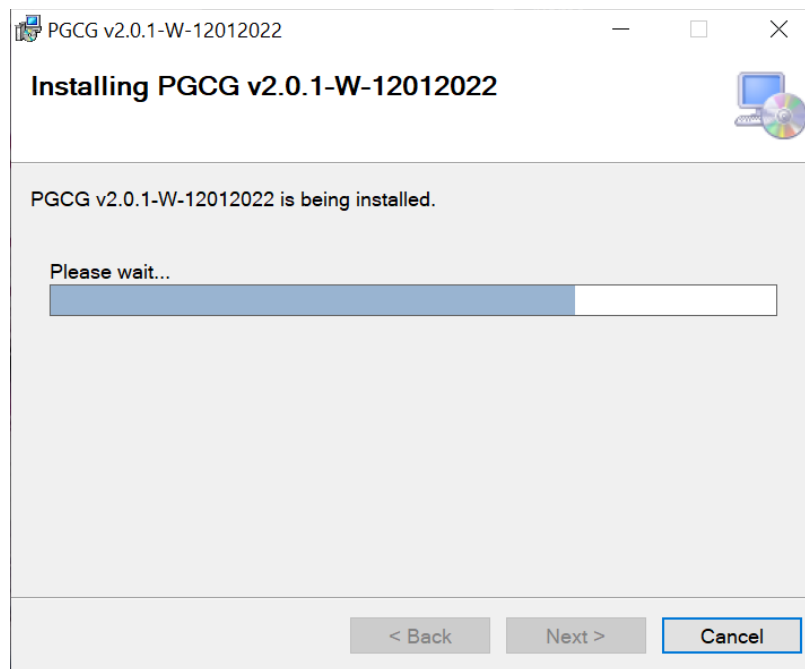


Figure 9

Step 9: Exit the setup wizard once the software has been installed successfully.

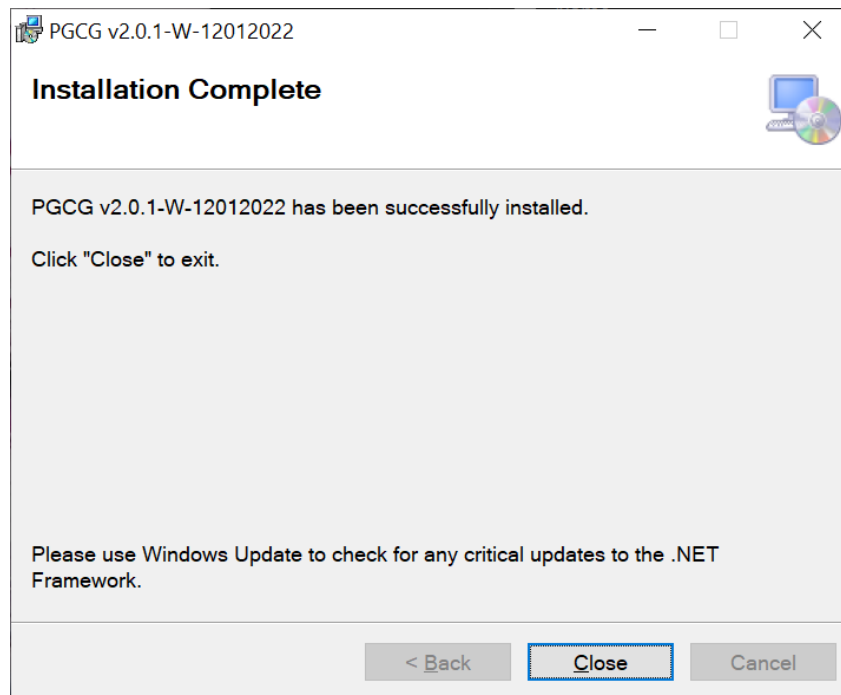


Figure 10

Step 10: The PGCG startup icon will appear on the desktop after installing. Run the application as administrator to start using it.



Figure 11

End of Document